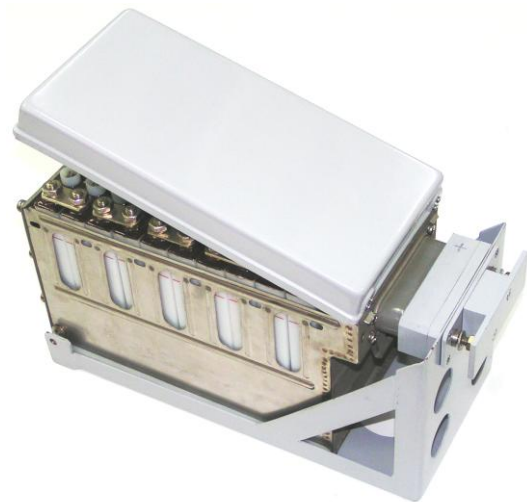


AIRCRAFT BATTERY

Type 20 KSX 25 P

with a connector enabling application in helicopters
(NSN 6140430013786)



Technical data

Battery nominal voltage:	24 V
Nominal capacity C_5 :	25 Ah
Cranking ability at discharge current:	250 A - minimal discharge time: 4,5 min to 16 V 375 A - minimal discharge time: 2,5 min to 14 V
Cycle life:	min. 250 cycles
Battery and connector weight:	max. 30,5 kg
Operating temperature:	from -40 °C to +60 °C
Dimensions (in mm, with the connector): L. x W. x H.	434 x 186 x 232

Application

- Engine start-up in different helicopters, inter alia, in Mi-2, Mi-8, Mi-14, Mi-17, Mi-24.
- Emergency power system for onboard DC control devices.